

David Weber-Krebs,
satellite picture for installation *The Earthly Paradise* (2017).

The satellite picture I would like to get is a representation of an area in Brazil at the crossing between the state of Rondônia and Matto Grosso. I need it for a work due to be presented in a group exhibition in april 2017 in Freiburg (Germany). It will be part of an installation titled *The Earthly Paradise*. The installation departs from the monumental painting by Johann Wenzel Peter (1745-1829) *Adam and Eve in the Earthly Paradise* (Vatican Museum). The painting depicts untouched nature as by a man and a woman surrounded by some 250 animals.



My work intends to make the bridge between this picture and our times by shifting the angle of view to a contemporary satellite picture that represents a straight line cutting into a large territory of green forest.

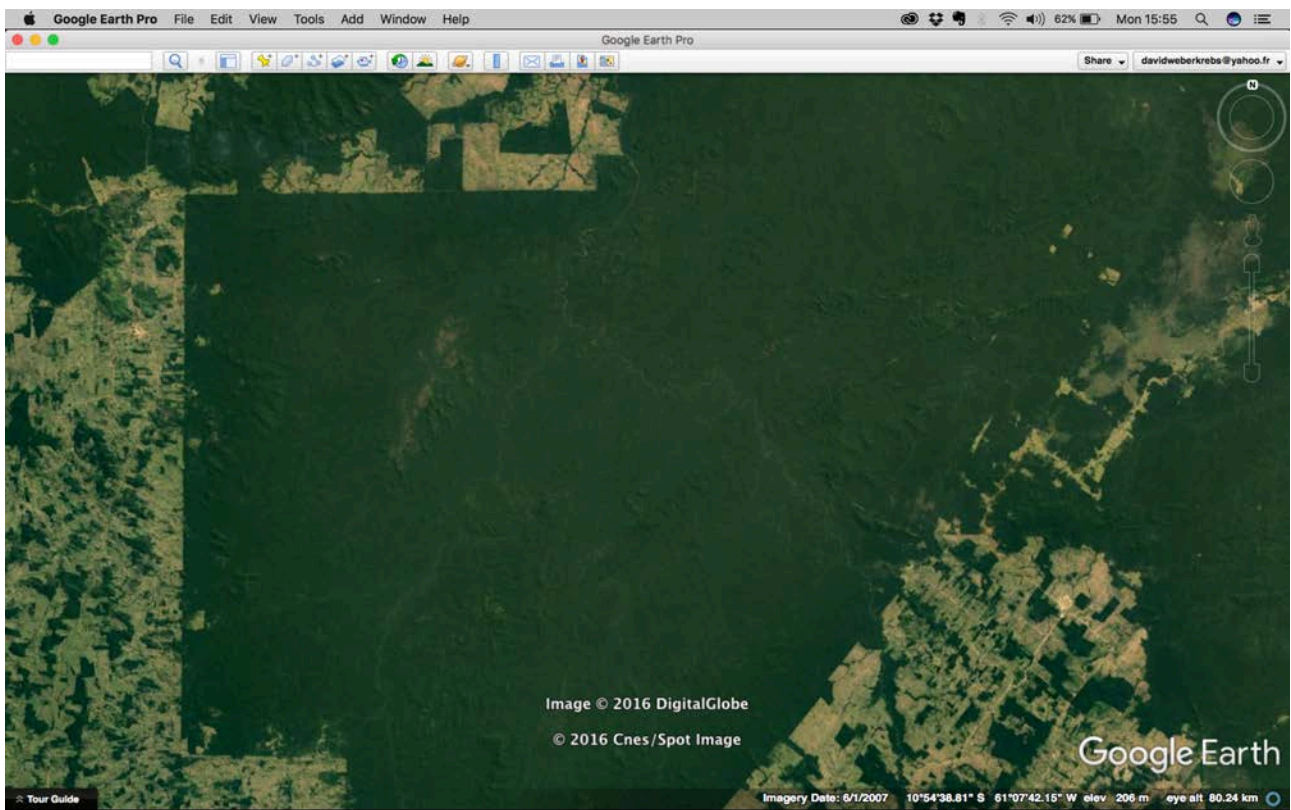
I am intending to print the satellite picture at the same size as the picture of Johann Wenzel Peter **3x2 meters**. Therefore I need big file in a high resolution **3x2 meters** at a minimum of **120dpi** (preferably **300 dpi**).

Preferably I'd like to be able to choose precisely for the right frame.
I give you here different views of the same area and a the final picture as it could look like.

Here is the larger area

coordinates with cursor in the middle

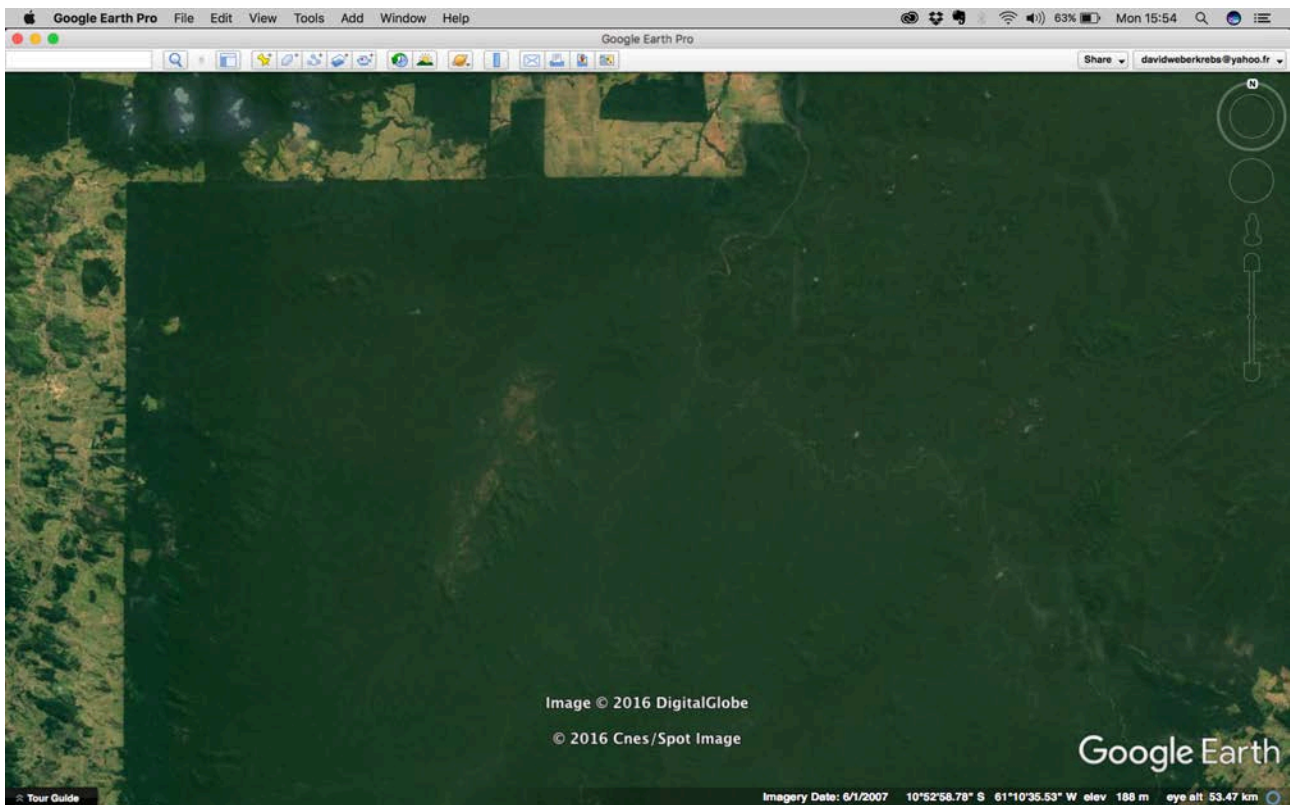
10°54'38.81" S 61°07'42.15" W eye alt. 80,24 m.



Here is a bit closer ([ideally I would like to have this frame in the best possible resolution](#))

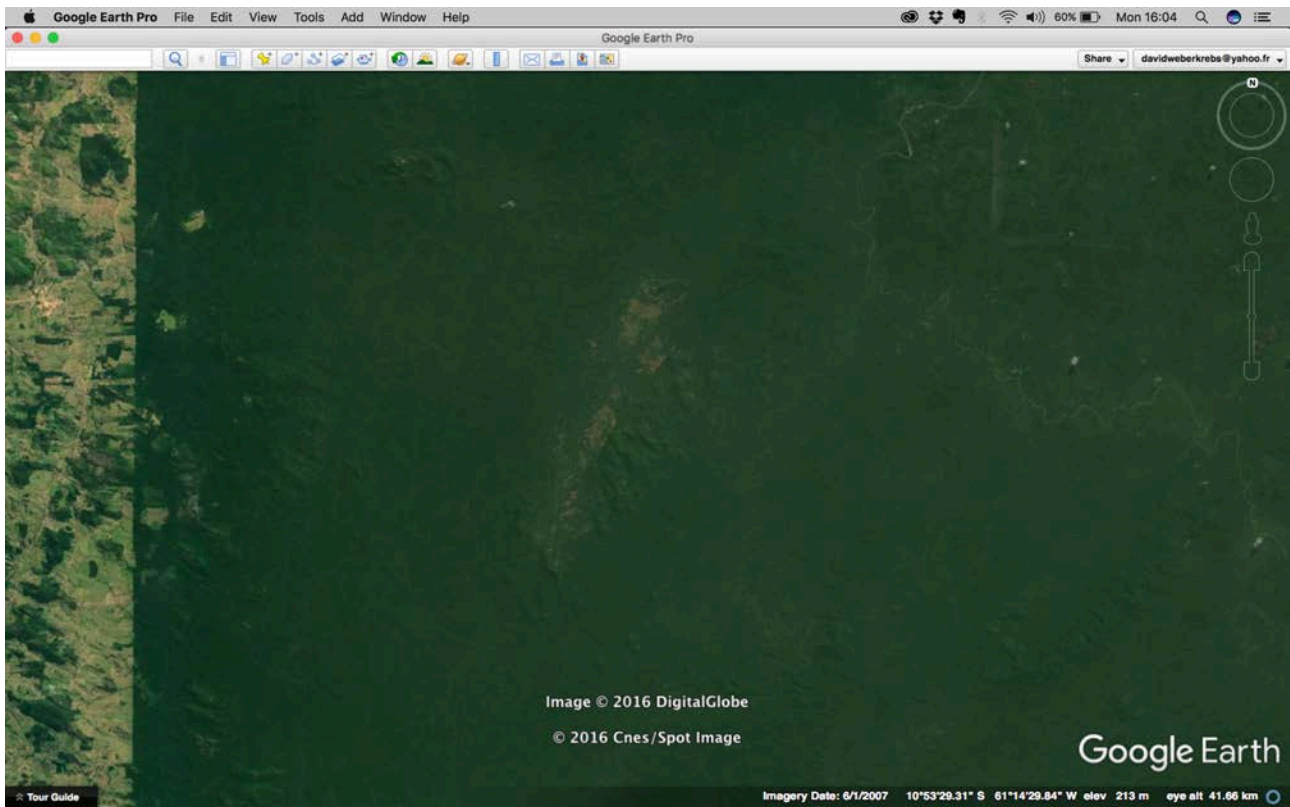
coordinates with cursor in the middle

10°52'58.78" S 61°10'35.53" W eye alt. 53,47 m.



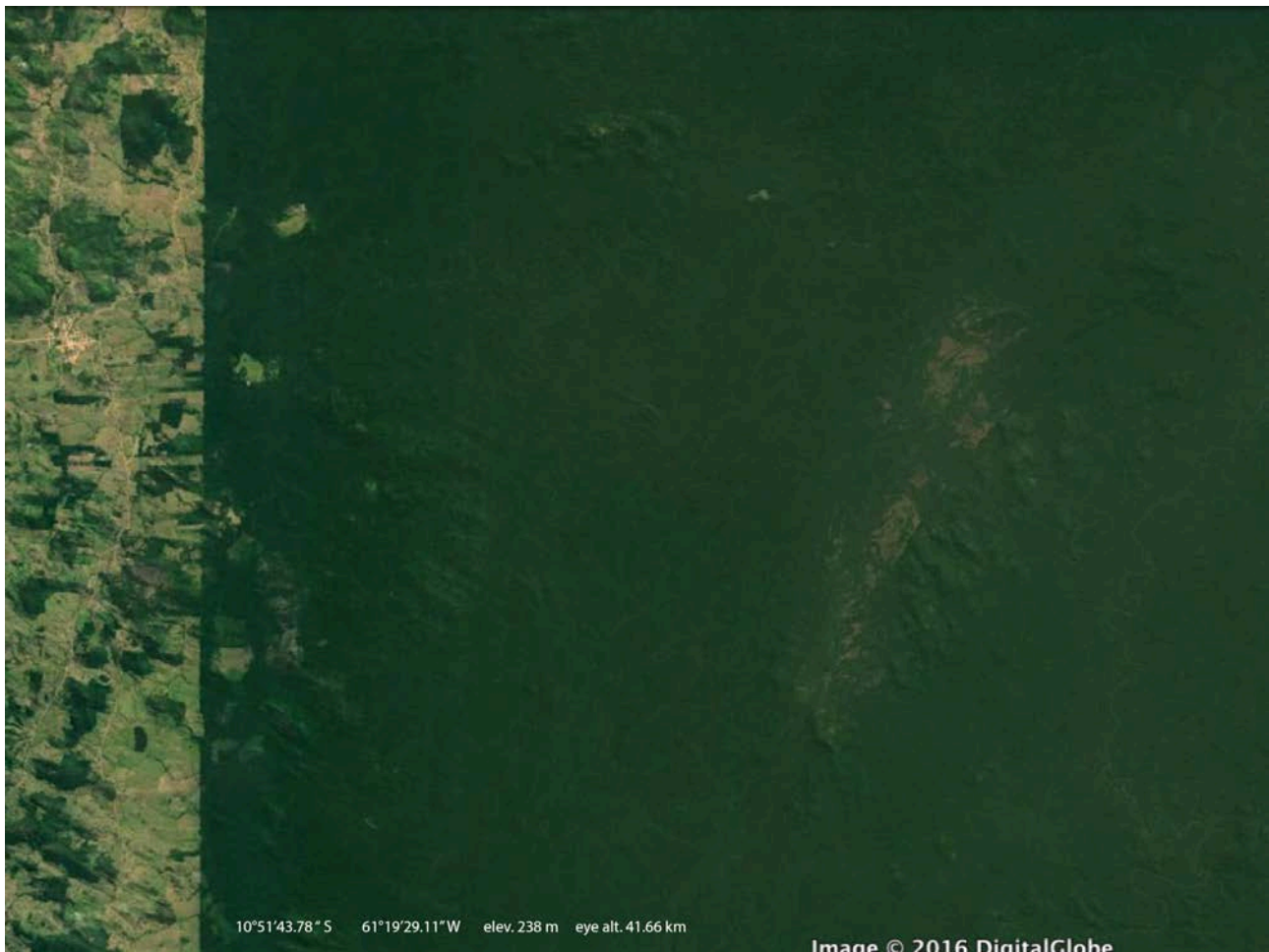
Here is the area at the right distance
coordinates with cursor in the middle

10°53'29.31" S 61°14'29.54" W eye alt. 41,66 m.

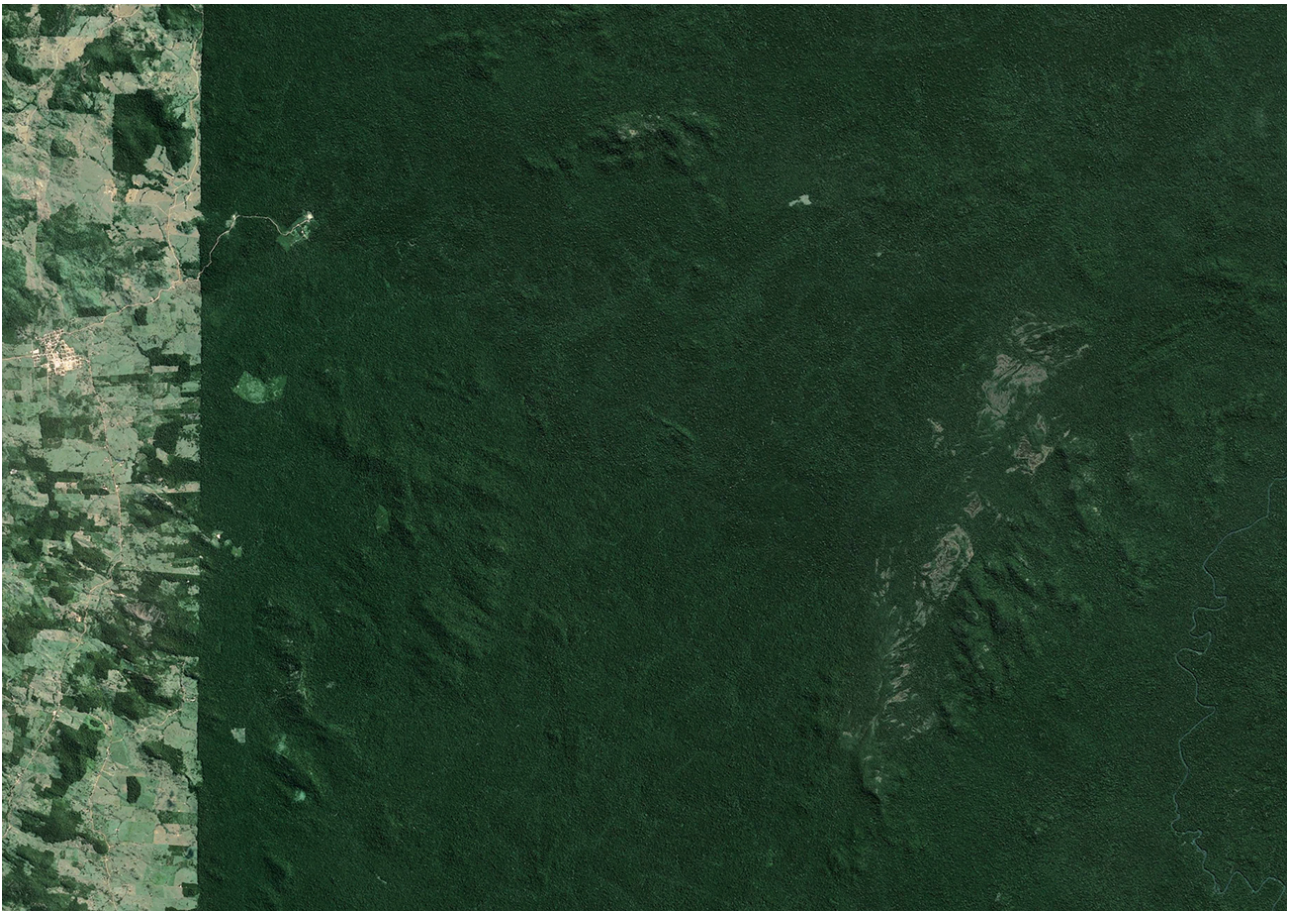


And finally the same picture but with approximately the right frame
coordinates with cursor in the middle

10°51'43.78" S 61°19'29.11" W eye alt. 41,66 m.



I attach here the picture how it could look like when processed with an image editor.



Many thanks.
Please don't hesitate to contact me.

David Weber-Krebs
davidweberkrebs@yahoo.fr

0032 499168590